

D7

TRACK-TYPE TRACTOR



Net Power

ISO 9249/SAE J1349

197 kW (265 hp)

ISO 9249/SAE J1349 (DIN)

268 mhp

Operating Weight (Standard SU/U)

29 776 kg (65,644 lb)

Cat® C9.3B Engine meets U.S. EPA Tier 4 Final/EU Stage V/Japan 2014/Korea Tier 4 Final emission standards.



The new Cat D7 joins the growing family of Next Generation Dozers, delivering more productivity and high drive undercarriage value. A fully automatic 4-speed transmission makes efficient operation easy. The broadest range of technology features in the industry work together seamlessly to help you make the most of your equipment investment.

THE NEW CAT[®] D7

ELEVATE YOUR PRODUCTIVITY



GAIN THE COMPETITIVE EDGE

An unprecedented choice of technology features help make your job easier.

- + Grade technologies help you hit target grade faster and more accurately. Save time and material, plus help operators of varied experience levels work more efficiently.
- + Link technologies connect you to your machines to help save time and money on service, not to mention added convenience.
- + New operator assist features work behind the scenes to help make machine operation easier.



NO NEED TO SHIFT

JUST SET YOUR GROUND SPEED AND GO.



- + No need to upshift/downshift
- + Fully automatic 4-speed transmission with lock-up clutch torque divider
- + Continuously selects the most productive, efficient gear and engine speed for the job

HIGH DRIVE

Elevated sprocket undercarriage delivers performance and value, while heavier frame and structures bring added durability for lower cost of ownership.

MOVE UP TO 8% MORE MATERIAL PER HOUR

Amp up your productivity with more weight and horsepower and a bigger blade. The smooth-shifting, fully automatic 4-speed powershift transmission provides efficiency and ease of operation, while a Next Generation cab sets a new standard in comfort and productivity.

UP TO 50% MORE PRODUCTIVITY WITH CAT TECHNOLOGY

A broad range of Grade technology choices and new operator assist features help boost productivity so you get the most from your machine. Remote Flash and Remote Troubleshoot help improve jobsite efficiency by saving you time.

All comparisons to D7E dozer.



MOVE MORE

Harness 6% more weight and 12% more horsepower to move up to 8% more material per hour. Get work done in fewer passes with 10% more blade capacity.



FULLY AUTOMATIC

Don't worry about changing gears. A smooth-shifting, fully automatic 4-speed transmission with lock-up clutch automatically optimizes based on load for greatest productivity and fuel efficiency.



HIGH DRIVE, HIGH PERFORMANCE

Elevated sprocket undercarriage delivers better ride and balance, plus improved penetration force for top dozing performance.



RELIABLE POWER

Cat C9.3B engine has a redesigned fuel system, as well as simplified electronics and emissions reduction, for greater reliability and reduced maintenance costs.

All comparisons to D7E dozer.

AUTOMATICALLY EFFICIENT

DO MORE WORK WITH LESS EFFORT



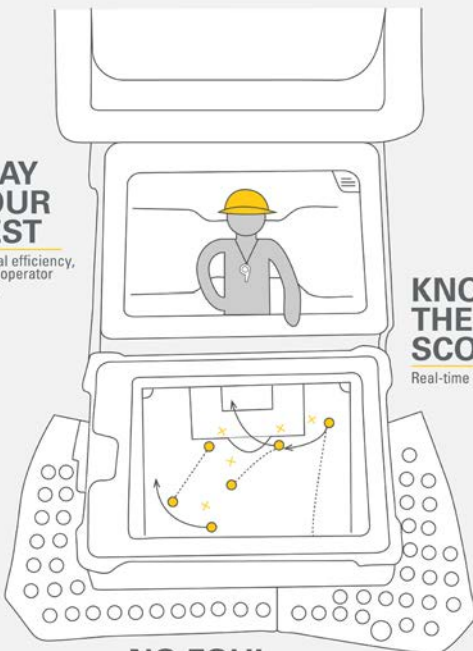
GAIN THE COMPETITIVE EDGE



CAT® TECHNOLOGY IS LIKE HAVING A COACH IN THE CAB

PLAY YOUR BEST

Optimal efficiency,
fewer operator
inputs



KNOW THE SCORE

Real-time Feedback

NO FOUL

Save rework, time, materials

An unprecedented selection of technology choices help you make the most of your equipment investment.

- + Grade technologies help operators of varied skill levels hit target grade faster and more accurately.
- + New operator assist features work together behind the scenes to help make machine operation easier.
- + Cab offers optimal interior mounting locations that make it simple to install the grade control system of your choice.
- + Link technologies, remote services and tools like the Cat App help connect you to your equipment to help save time and money on service and maintenance.
- + Cat Command for Dozing offers remote control operation for enhanced safety and greater productivity.

CAT GRADE TECHNOLOGY

BOOST YOUR PRODUCTIVITY

FIRST PASS TO FINISH GRADE

Factory integrated Cat Grade with 3D uses a GPS signal to automatically adjust blade movements – both lift and tilt – as you follow the design. Save time, labor and materials on all phases of the job. The friendly 10-inch (254 mm) touchscreen grade display works like a smart phone, so it is easy for operators to pick up quickly. Antennas are integrated into the cab roof for even better protection.



NO GPS SIGNAL? NO PROBLEM

Cat Grade with Slope Assist automatically maintains blade position without a GPS signal. Put it to work building pads, creating simple design plans on-the-go or working where GPS is unavailable. Slope Assist works seamlessly alongside 3D GPS systems.

READY WHEN YOU ARE

With Attachment Ready Option (ARO), your dozer comes from the factory ready for simple installation of a grade control system. You will also find a mounting location and connections in the cab to make it easier to utilize your technology systems. ARO with Assist bundles the grade-ready option with features that work in the background to help operators get more done in less time.

READY TO HELP

OPERATOR ASSIST FEATURES



SMOOTH OPERATOR

Stable Blade has been improved to make it even easier to get smoother surfaces faster when operating manually. Works seamlessly with operator blade inputs to help reduce imperfections and produce a smoother surface.

MAKE THE MOST OF EVERY PASS

AutoCarry automates blade lift to help you get more consistent blade loads with each pass and reduce track slip. Works seamlessly with Grade with 3D but can now also be utilized when the dozer is not running in automatics.

OPTIMAL BLADE LOADS

Blade Load Monitor gives you real-time feedback on current load versus the optimal blade load based on your ground conditions. Actively monitors machine load and track slip to help you reach optimal pushing capacity.

KEEP PUSHING FORWARD

Save time, effort, fuel and track wear. If high track slip is detected, Traction Control temporarily reduces track power so the operator can adjust blade load and limit the track slip.

CAT LINK TECHNOLOGY

TAKES THE GUESSWORK OUT OF MANAGING YOUR EQUIPMENT

Cat Link telematics technology helps take the complexity out of managing your jobsites by gathering data generated by your equipment, materials and people, and serving it up to you in customizable formats.

CAT PRODUCT LINK™/VISIONLINK®

Product Link collects data automatically from your assets – any type and any brand. Access information anytime, anywhere with VisionLink – and use it to make informed decisions that boost productivity, lower costs, simplify maintenance and more. Satellite and/or cellular subscriptions are available.



REMOTE SERVICES

The Cat App helps you manage your assets – at any time – right from your smartphone. See fleet location and hours, get critical required maintenance alerts and even request service from your local Cat dealer.

- + **Remote Flash** – get software updates to one or more machines remotely.
- + **Remote Grade** lets you wirelessly manage site plans via Trimble Connect Services.
- + **Operator ID** lets you track machine operation by individual operator using the main display and Product Link.



REMOTE CONTROL READY

When dozers work in hazardous mining and earthmoving applications, the Command for Dozing option helps improve safety and efficiency. Operator controls the machine using a line-of-sight console or a remote operator station. Deep integration with machine systems enables smooth, precise control for maximum efficiency and productivity.

Please consult your Cat dealer for regional availability.



COME ON IN AND MAKE YOURSELF COMFORTABLE

Step into a spacious cab that resets the industry standard for operator comfort, visibility and ease of operation. Integrated Rollover Protective Structure (ROPS) leaves plenty of glass area for all-around visibility. Cleaner sight lines along the hood give you an excellent view to the blade.



STAY IN TOUCH

10-inch (254 mm) touchscreen main display is easy to use, with a great view of machine settings and features. The standard high-definition rearview camera shows prominently in the display and includes backup lines to guide you.

WORK SPACE

A wider air-suspension seat gives you plenty of adjustments, so you can find just the right position. Enjoy more storage space, along with updated heating/cooling to help keep you more comfortable and reduce window fogging/frosting too.

ON-BOARD HELP

Key Features button in the display gives you a machine overview, along with helpful operating tips. Learn more about technology and machine features that help you get the most from your dozer.

DURABLE BY DESIGN

BIGGER, BRAWNIER, READY TO WORK

Heavier frame and structures, along with some D8-sized components and an updated track roller frame, make the D7 even more durable. The 12-foot (3.5 m) shipping width* means you have a dozer that is robust enough to take on tough jobs but easy to transport with the blade installed.

GROUNDING IN DURABILITY

Heavy Duty Extended Life (HDXL) undercarriage is designed to save you money by extending service life in a wide range of applications. Choose Standard or Low Ground Pressure (LGP) undercarriage to outfit your dozer for the type of work you do.



KEEP PUSHING

Semi-Universal (SU) and Straight (S) blades are 10% larger to help you finish in fewer passes. Strong box section design, heavy moldboard construction, hardened bolt-on cutting edges and end bits add strength and durability.

CUTTING EDGE PERFORMANCE

Optional Performance Cutting Edges for SU blades help you move material faster, especially in hard ground.

- + Patented design moves more material per pass – increases blade payload by up to 25%**
- + Easier blade penetration in hard/frozen ground, moderate rock
- + Digs deeper – aids blade control, load retention, traction – reduces track slip, improves undercarriage life
- + Equal wear life/life cycle cost* – no mid-life edge flip or end bit replacement required, reducing down time for maintenance
- + Built-in wear indicators, drilled and tapped holes for safer installation, interchangeable with traditional edges
- + Versatility – on-plane cutting system allows finish grading

* Standard configuration

** Compared to standard cutting edges

FACTORY EQUIPPED TO TAKE ON THE TRASH



TOUGH ON TRASH

Factory-installed guarding and seals help protect the machine from impact, wrapping and airborne debris. High-debris cab has impact-resistant polycarbonate doors and dual pane windows to eliminate the need for door screens.

COOLING AND CLEANOUT

High-debris cooling system has automatic reversing fan and slots for easy cleanout. Trash-resistant radiator helps reduce plugging. Laminated thermal shields on the engine and aftertreatment provide added protection in high-debris environments.

OPTIMIZED FOR PERFORMANCE

Specialized landfill blades include a trash rack for more capacity when working in lighter material. Heavy Duty Extended Life undercarriage has Kevlar-guarded sealed idlers to help protect against seal damage from wrapping. Center-hole track helps eject debris.

EQUIPPED FOR THE JOB

Choose from a variety of factory options for added protection in harsh applications like forestry and pipe line.



YOUR DOZER, YOUR WAY **BUILD TO SUIT**

Sweeps, door/window screens, debris-resistant cab, heavy guarding and more – pick from a variety of options that help protect your operator and your equipment investment. Heavier C-frame for angle blades adds durability and Positive Pin Retention Track is ideally suited for higher-impact conditions. Factory connections make it easy to fit the machine with a ripper or a dealer-installed winch. Consult with your Cat dealer to learn more about the right options for the work you do.

MORE THAN MACHINES

BUILT AROUND YOUR SUCCESS

When you buy Cat equipment, you get so much more than the machine. You also get the support of a best-in-class dealer network, backed by a range of flexible solutions, technology, tools and more.



CUSTOMER VALUE AGREEMENTS

A Customer Value Agreement (CVA) from your Cat dealer helps you do more and worry less. A CVA simplifies machine ownership and maintenance, adds the security of expert dealer support and gives you the peace of mind from effective equipment health management.

REPAIR OPTIONS

A broad range of repair options give you choices that work with your needs, budget and timeline. Every repair is performed by expert Cat technicians. You'll receive smart repair advice, a timely, accurate quote and service that gets your machine back into action quickly.

GENUINE CAT PARTS

Genuine Cat Parts deliver the highest level of reliability and productivity. Order direct from your Cat dealer or shop online at parts.cat.com or myparts.cat.com.

FINANCIAL SERVICES

Count on Cat Financial to provide the best finance and extended protection solutions for your business. For more than 30 years, we have helped our customers succeed through financial service excellence.

GET BACK TO WORK

Services to help you save time, save money and get back on the job.

CAT INSPECT

Access your equipment data on your mobile device. This easy-to-use app lets you capture inspection data and integrates with your other Cat data systems, so you can keep a close eye on your fleet.

HYDRAULICS AND HOSE

Whether you choose new, Reman, exchange or rebuilt hydraulic components, you'll get expert diagnostics, testing and contamination control. Cat Hose Service offers hoses and couplings for most makes and models.

CERTIFIED REBUILD

Get a full second machine life at a fraction of the cost of buying new. With upgraded features, safety enhancements and the latest technologies, your old machine will perform even better than it did when it rolled off the line.

TECHNICAL SPECIFICATIONS

See cat.com for complete specifications.

ENGINE			
Engine Model	Cat C9.3B		
Emissions	U.S. EPA Tier 4 Final/EU Stage V/ Japan 2014/Korea Tier 4 Final		
Build Number	17A		
Power Train	Fully Automatic 4-Speed		
Net Power - 2200 rpm			
ISO 9249:2007/SAE J1349:2011	197 kW	265 hp	
ISO 9249:2007/SAE J1349:2011 (DIN)	268 mhp		
Displacement	9.3 L	567 in ³	

- Net power available at the flywheel when the engine is equipped with fan, air cleaner, aftertreatment and alternator with engine speed at 2,200 rpm.
- All nonroad Tier 4 Interim and Final, Stage IIIB, IV and V, Japan 2014 (Tier 4 Final) and Korea Tier 4 Final diesel engines are required to use only Ultra Low Sulfur Diesel (ULSD) fuels containing 15 ppm EPA/10 ppm EU (mg/kg) sulfur or less. Biodiesel blends up to B20 (20% blend by volume) are acceptable when blended with 15 ppm (mg/kg) sulfur or less ULSD. B20 should meet ASTM D7467 specification (biodiesel blend stock should meet Cat biodiesel spec, ASTM D6751 or EN 14214). Cat DEO-ULS™ or oils that meet the Cat ECF-3, API CJ-4 and ACEA E9 specification are required. Consult your OMM for further machine specific fuel recommendations.
- Diesel Exhaust Fluid (DEF) used in Cat Selective Catalytic Reduction (SCR) systems must meet the requirements outlined in the International Organization for Standardization (ISO) standard 22241.
- The air conditioning system on this machine contains the fluorinated greenhouse gas refrigerant R134a (Global Warming Potential = 1430). The system contains 1.36 kg of refrigerant which has a CO₂ equivalent of 1.946 metric tonnes.

SERVICE REFILL CAPACITIES			
Fuel Tank	465.0 L	122.8 gal	
DEF Tank	44.0 L	11.6 gal	

WEIGHT				
	Operating Weight		Ground Pressure**	
Standard SU with Ripper	29 776 kg	65,644 lb	72.1 kPa	10.5 psi
LGP S with Drawbar	28 677 kg	63,220 lb	43.4 kPa	6.3 psi
Waste Handler	28 140 kg	62,035 lb	68.3 kPa	9.9 psi

SU ripper weight with three ripper shanks = 2993 kg (6,596 lb)

** with standard shoes and drawbar attachment per ISO 16754

BLADES				
	Capacity		Width	
Standard Semi-Universal (SU)	7.4 m ³	9.7 yd ³	3500 mm	138.0 in
LGP Straight (S)	6.2 m ³	8.1 yd ³	4150 mm	163.0 in
Standard Angle (A)	4.2 m ³	5.4 yd ³	4320 mm	170.0 in
LGP Angle (A)	4.7 m ³	6.2 yd ³	4770 mm	188.0 in
Standard Universal (U)	8.6 m ³	11.2 yd ³	3788 mm	149.0 in
Standard U-Landfill	16.6 m ³	21.7 yd ³	3788 mm	149.0 in

DIMENSIONS*						
	Standard SU		LGP S		Waste Handler	
Track Gauge	1981 mm	78.0 in	2235 mm	88.0 in	1981 mm	78.0 in
Width of Standard Shoe	610 mm	24.0 in	915 mm	36.0 in	610 mm	24.0 in
Width of Tractor (without trunnions)	2591 mm	102.0 in	3150 mm	124.0 in	2591 mm	102.0 in
Machine Height (to ROPS)	3354 mm	132.0 in	3354 mm	132.0 in	3354 mm	132.0 in
Machine Height (to ROPS) including grouser height	3436 mm	135.3 in	3428 mm	135.0 in	3436 mm	435.3 in
Length of Track on Ground	2972 mm	117.0 in	3200 mm	126.0 in	2972 mm	117.0 in
Length of Basic Tractor	4659 mm	183.4 in	4659 mm	183.4 in	4659 mm	183.4 in
With the following attachments, add to basic tractor length						
SU Blade	1125 mm	44.0 in			1125 mm	44.0 in
S Blade			840 mm	33.0 in		
U Blade	1365 mm	54.0 in			1365 mm	54.0 in
Landfill Blade	1125 mm	44.0 in	840 mm	33.0 in	1125 mm	44.0 in
Drawbar	260 mm	10.2 in	270 mm	10.6 in	260 mm	10.2 in
Ripper	1555 mm	61.2 in	1565 mm	61.6 in	1555 mm	61.2 in
Winch	735 mm	28.9 in	745 mm	29.3 in	735 mm	28.9 in

*Heavy Duty Undercarriage

STANDARD & OPTIONAL EQUIPMENT

Standard and optional equipment may vary. Consult your Cat dealer for details.

POWER TRAIN	STANDARD	OPTIONAL
Fully automatic 4-speed transmission with lock-up clutch	•	
Cat C9.3B diesel engine	•	
Double reduction 3-planet planetary final drives	•	
Electric fuel priming pump	•	
OPERATOR ENVIRONMENT	STANDARD	OPTIONAL
Fully redesigned cab, sound suppressed, with Integrated ROPS and FOPS	•	
Dual pane/polycarbonate window Special Application Cab		•
Full-color 254 mm (10 in) liquid crystal touchscreen display	•	
Integrated rearview camera	•	
Adjustable operator controls/armrests	•	
Cab-mounted modular HVAC system	•	
Added storage areas	•	
Electrohydraulic implement and steering controls	•	
Cloth seat	•	
Deluxe leather heated/ventilated seat		•
Communication radio ready		•
Lights – 6 LED	•	
Premium lights – 12 LED		•
Integrated warning lights		•
BLADES	STANDARD	OPTIONAL
Semi-Universal		•
Universal		•
Straight blade		•
Angle blade		•
Waste/Landfill		•
UNDERCARRIAGE	STANDARD	OPTIONAL
Heavy Duty (HDXL with DuraLink)	•	
Moderate Service track shoes	•	
Extreme Service track shoes		•
HYDRAULICS	STANDARD	OPTIONAL
Independent steering and implement pumps	•	
Load-sensing hydraulics	•	

CAT TECHNOLOGY	STANDARD	OPTIONAL
Slope Indicate	•	
ARO with Assist		
- Slope Assist		
- Traction Control		
- Stable Blade		•
- Blade Load Monitor		
- AutoCarry		
- Third-party Grade Control Ready		
Cat Grade with 3D		
- Full-color 10-inch (254 mm) touchscreen grade display		•
- Grade receivers and antennas		
- Grade Software Enabled Attachment (SEA)		
- ARO with Assist features		
Product Link, Cellular	•	
Product Link – Dual Cellular/Satellite		•
Remote Flash/Troubleshoot	•	
Grade Connectivity		•
Operator ID	•	
Machine Security – Passcode	•	
Machine Security – Bluetooth®		•
Remote Control Ready	•	
Cat Command for Dozing		•
SERVICE AND MAINTENANCE	STANDARD	OPTIONAL
Fast fuel fill	•	
Hydraulic reversing fan	•	
Shovel holder	•	
Ground-level service center	•	
30-minute cab removal	•	
Quick access cab floor		•
Ecology drains	•	
High-speed oil change		•
Underhood work light	•	
ATTACHMENTS	STANDARD	OPTIONAL
Multi-shank ripper		•
Winch		•
Drawbar		•
Counterweights		•
Striker bar box		•
Side screens		•
Rear screen – hinged or fixed		•
Sweeps		•

Not all features are available in all regions. Please check with your local Cat dealer for specific offering availability in your area. For additional information, refer to the Technical Specifications brochures for the D7 available at www.cat.com or your Cat dealer.



オフロード法2014年
基準適合

For more complete information on Cat products, dealer services and industry solutions, visit us on the web at www.cat.com.

VisionLink is a trademark of Trimble Navigation Limited, registered in the United States and in other countries.

Materials and specifications are subject to change without notice. Featured machines in photos may include additional equipment. See your Cat dealer for available options.

©2020 Caterpillar. All Rights Reserved. CAT, CATERPILLAR, LET'S DO THE WORK, their respective logos, Product Link, DEO-ULS, "Caterpillar Corporate Yellow", the "Power Edge" and Cat "Modern Hex" trade dress as well as corporate and product identity used herein, are trademarks of Caterpillar and may not be used without permission.

www.cat.com www.caterpillar.com

AEXQ3002-00
Build Number: 17A
(Eur, Jpn, Korea, N Am)

