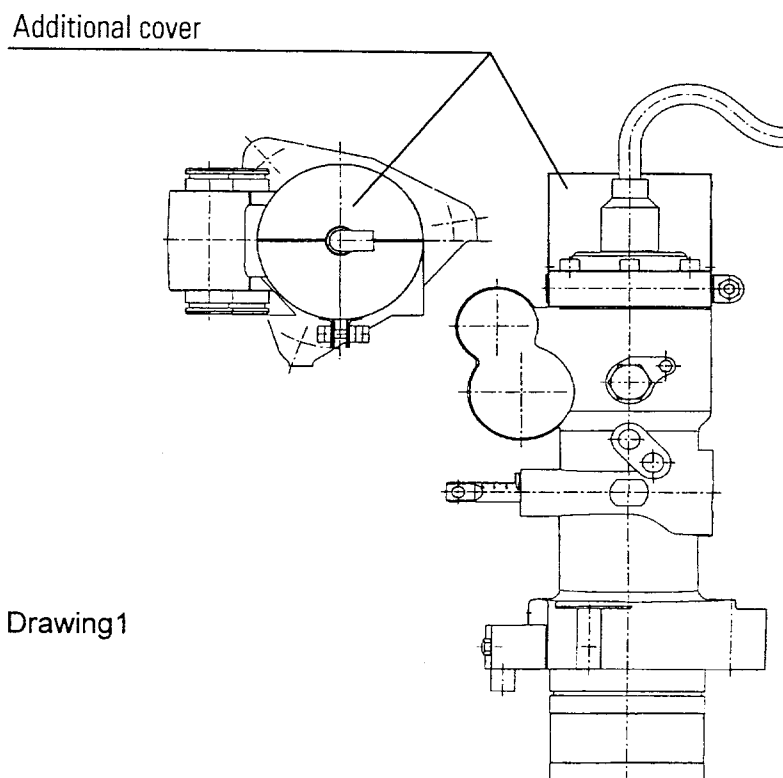


Injection pump M32

In the recent past leakages have sporadically occurred to the injection pumps in the area of the pressure-balancing delivery valve housing / connecting piece, shortly after commissioning within the first 400 engine running hours. They were caused by discontinuities in the material leading to cracks in the connecting piece of the engine. Unfortunately, the small production lot of connecting pieces with discontinuities cannot be undoubtedly assigned to already delivered specific engines.

Normally any danger, either to the engine or to the operating personnel can be excluded because the leaking fuel is protected against its surroundings by the cover of the injection pump chamber. As during trial run and daily maintenance the engine is operated without pump chamber covers, we have provided as further preventive measure a cover for the injection pump connecting pieces, see drawing 1. This additional protection will be fitted by our representative during engine commissioning. The cover protects the connecting piece and in case of damage conducts the leaking fuel safely into the drain channel of the pump chamber. Since all damages occurred during the first 400 running hours, the additional protection can be removed after 1000 running hours. Based on previous operating experiences we expect that the injection pumps will work absolutely reliably after reaching this operating time.

**Drawing1**