

Running appearance valve cams and rollers

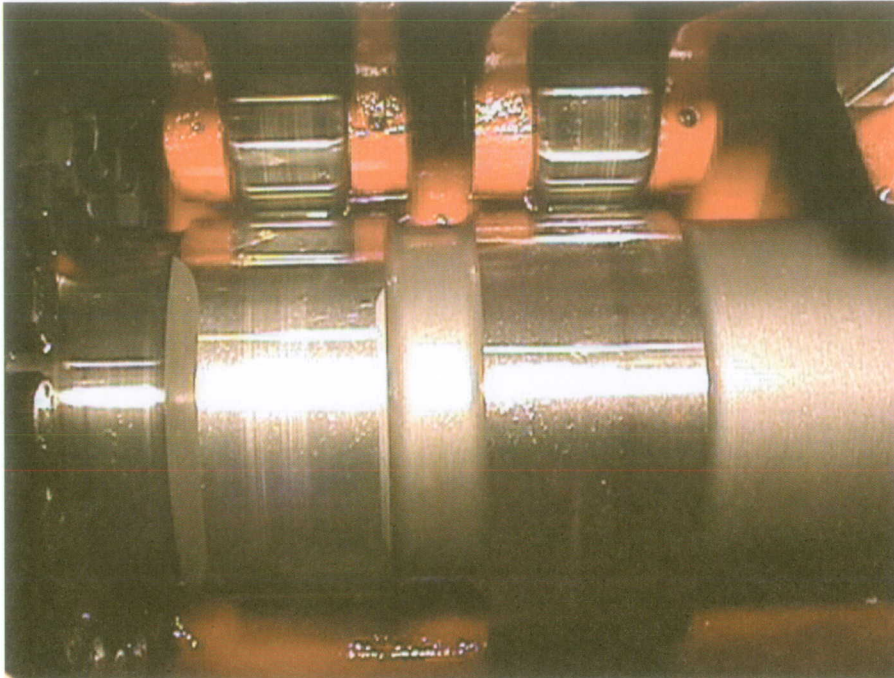
Due to on going questions regarding the early hour appearance of valve cams and rollers we offer the following position:

After a very short running period, such as after the test bed run or during commissioning, a clear running appearance is visible on the cams and rollers of the inlet and exhaust valves. This may grow more distinct during the first 1000 operating hours. During further operation this process comes to a standstill and the running appearance changes only insignificantly. Normally the running appearance can hardly be sensed by hand or touch and does not affect the operating reliability. Our vast field experience has confirmed this.

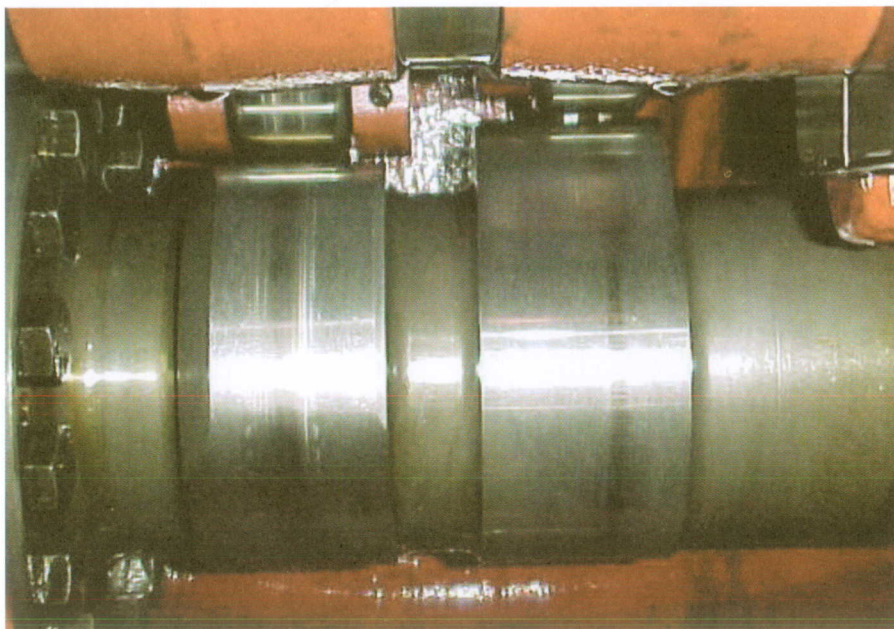
The fuel cams do not normally display this appearance. Under normal operating conditions only slight running traces are visible in the area of the fuel cam roller lifting surface.

To illustrate this, pictures with the typical running appearance are attached to this service information.

Laufbilder Ventilnocken und Rollen - running appearance valve cams and rollers



Laufbild nach 20 Bh - running appearance after 20 operating hours



Laufbild nach 5 400 Bh - running appearance after 5 400 operating hours