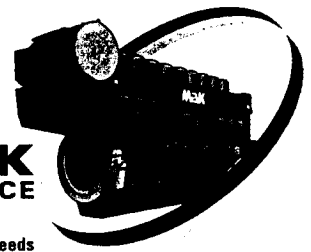


Service Information No. 00/10

Date 13.10.2000

MAK
SERVICE

Focused on
Customer Needs



Low-Pressure Piping at Injection Pumps

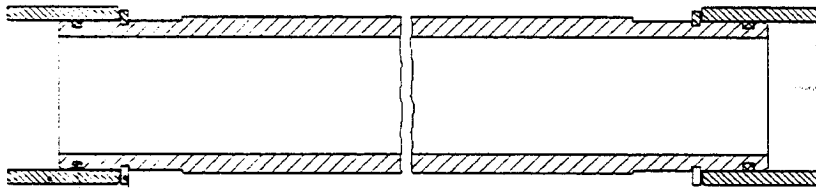
M 32

When the new M32 generation was launched on the market in 1997, included in the many technical innovations was a modified injection pump with the low-pressure piping for fuel feed and return. This new design incorporated parts of the system into the injection pumps which not only saves sealing and component parts but also simplifies assembly and maintenance work.

The system has proven reliable in operation, however in heavy fuel operation leaks have occurred at the pipe seals on the injection pumps.

In order to obtain a lasting improvement of the sealing function the sliding tubes have been replaced by a reinforced construction with screwed on mounting flanges. The new design has been successfully tested through long term field validation.

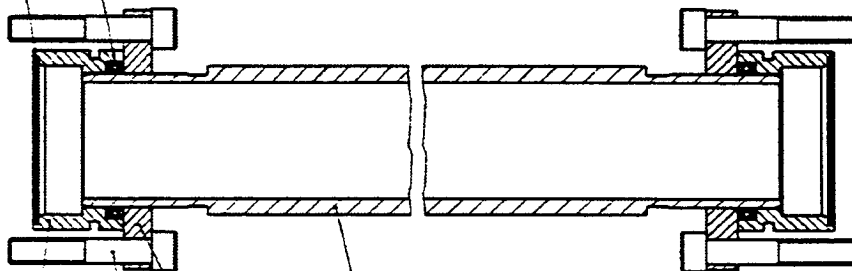
The new piping is available and used in series on all new M32 engines.



old design

102 103 104

105 104



new design

102 106 103 101

Service Information No. 00/10

Date 13.10.2000

MaK
SERVICE
Focused on
Customer Needs



Low-Pressure Piping at Injection Pumps

M 32

To ensure proper sealing of this critical component your local MaK Service Station will send you all parts which are necessary for this conversion at no cost to you. Furthermore we will provide you with the new pages of the spare parts catalogue for your engine. Please exchange them in your documents.

To guarantee a trouble-free operation, the following items must be observed when assembling the new pipes:

- After dismantling the old pipes remove the pressure pipes and slightly loosen the three fastening screws.
- Before assembly coat all joint rings sufficiently with Vaseline or a similar grease.
- During assembly be careful not to damage the joint rings.
- First coat the screws for the flanges of the low-pressure piping with Molykote, tighten them lightly and then tighten the fastening screws of the injection pumps again with the prescribed torque.
- Tighten the screws of the mounting flanges to 25 Nm.

Please send the removed pipes together with the filled in attached form to your local agency or directly to Caterpillar Motoren Kiel at the first opportunity.

For any further questions on this subject please do not hesitate to contact your usual service station.



M32 - Modification of Fuel Inlet and Return Pipes

in connection with Service Info No. 00/10

After modification of the low pressure fuel piping
please fill in this sheet and send back to the responsible
MaK service station or to Caterpillar Motoren, Kiel - Department MK 21

Vessel / plant :

Engine type :

Engine No. :

Exchange of fuel inlet and return pipes carried out

Date :

By whom :

Old pipes delivered back to MaK

Date:

By whom :

Delivered to :

Remarks :

Signature

MaK Service

Shipping company / Customer

Date:
