

Service Information No. 12/06

Date: 06.12.2006

Check of the Installed Inlet and Exhaust Valves

M 43

While checking an engine already in service it was found that the inlet and exhaust valves had been interchanged on one cylinder head. Due to the low number of operating hours we have to assume that this engine left our facility in this condition.

We cannot definitely exclude further cases of interchanged valves. In order to avoid valve damages, especially in the exhaust area, resulting from interchanged valves, a precautionary check should be carried out.

- ❑ On all engines already supplied but not yet commissioned a check regarding correct installation of the valves will be carried out by the dealer service personnel during commissioning.
- ❑ For engines already in service these checks should be carried out by the crew on board.

Based on our internal documentation we have found that it cannot be excluded that the valves got mixed up on your engine.

Therefore, please instruct your crew on board to check the valve markings on all cylinder heads incl. spare heads as soon as possible. These checks can be carried out very quickly. After removing the valve covers, the exhaust valves can be recognized by the identification "out" located at the end of the valve stem above the valve spring retainers or the ball races.

Only on M43 engines attention must be paid that these engines are equipped with ball races that can be recognized by the balls of the axial bearings. (arrow)

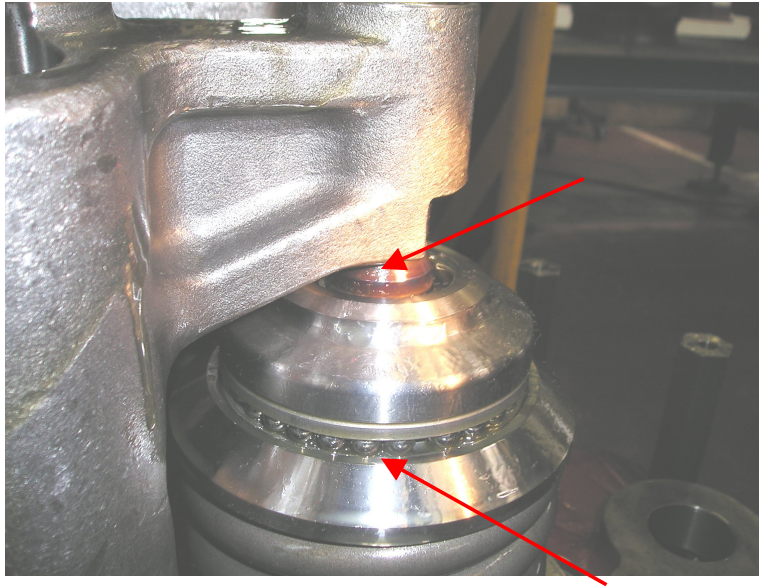
The photo on the next page shows how to identify the valves.

Service Information No. 12/06

Date: 06.12.2006

Check of the Installed Inlet and Exhaust Valves

M 43



With very few exceptions, the abbreviation **OUT** is always stamped on the exhaust valves on the upper edge (arrow).

If the designation **OUT** cannot be found on the exhaust valves of your engines, or this designation is found on the inlet valves, please note down the complete marking and inform your dealer. In such cases the service personnel of your dealer will change the valves and check them for proper condition as soon as possible and naturally free of charge under warranty.